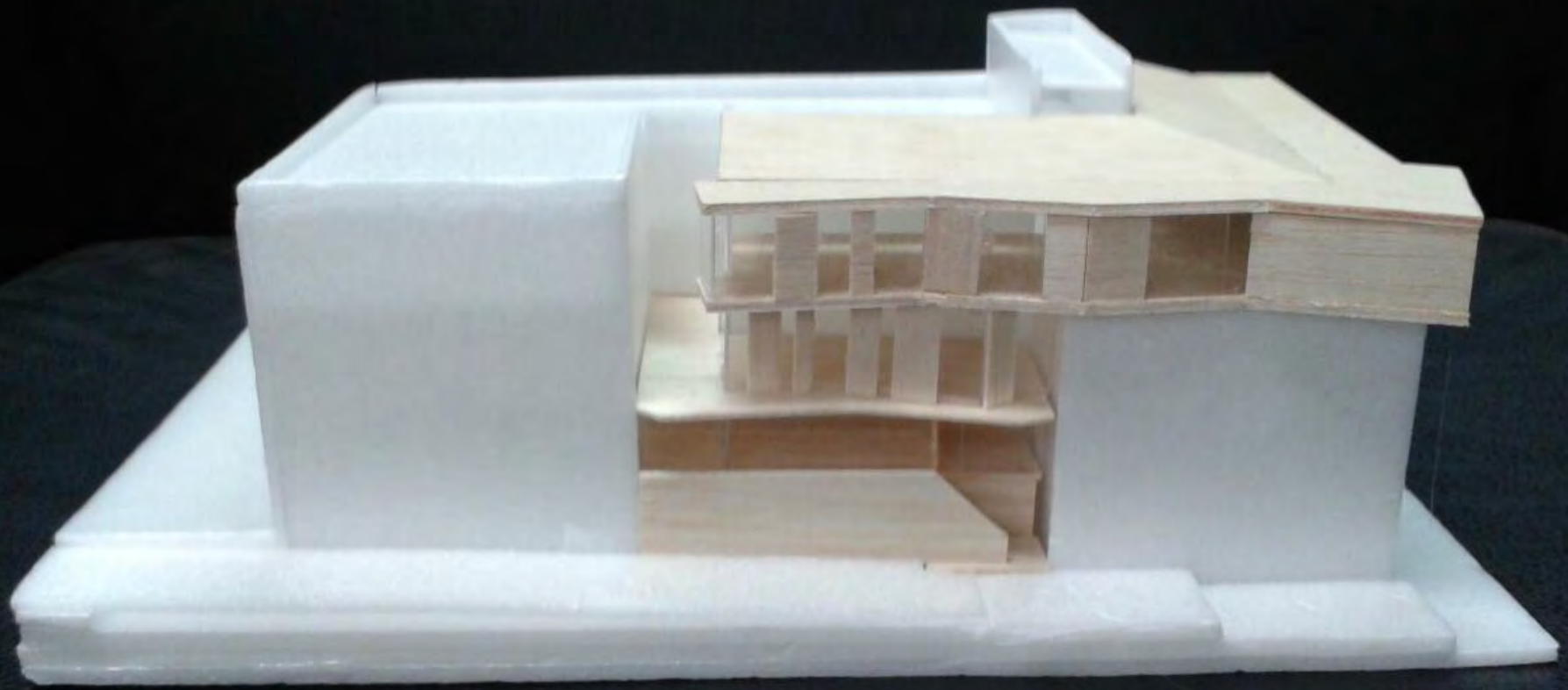
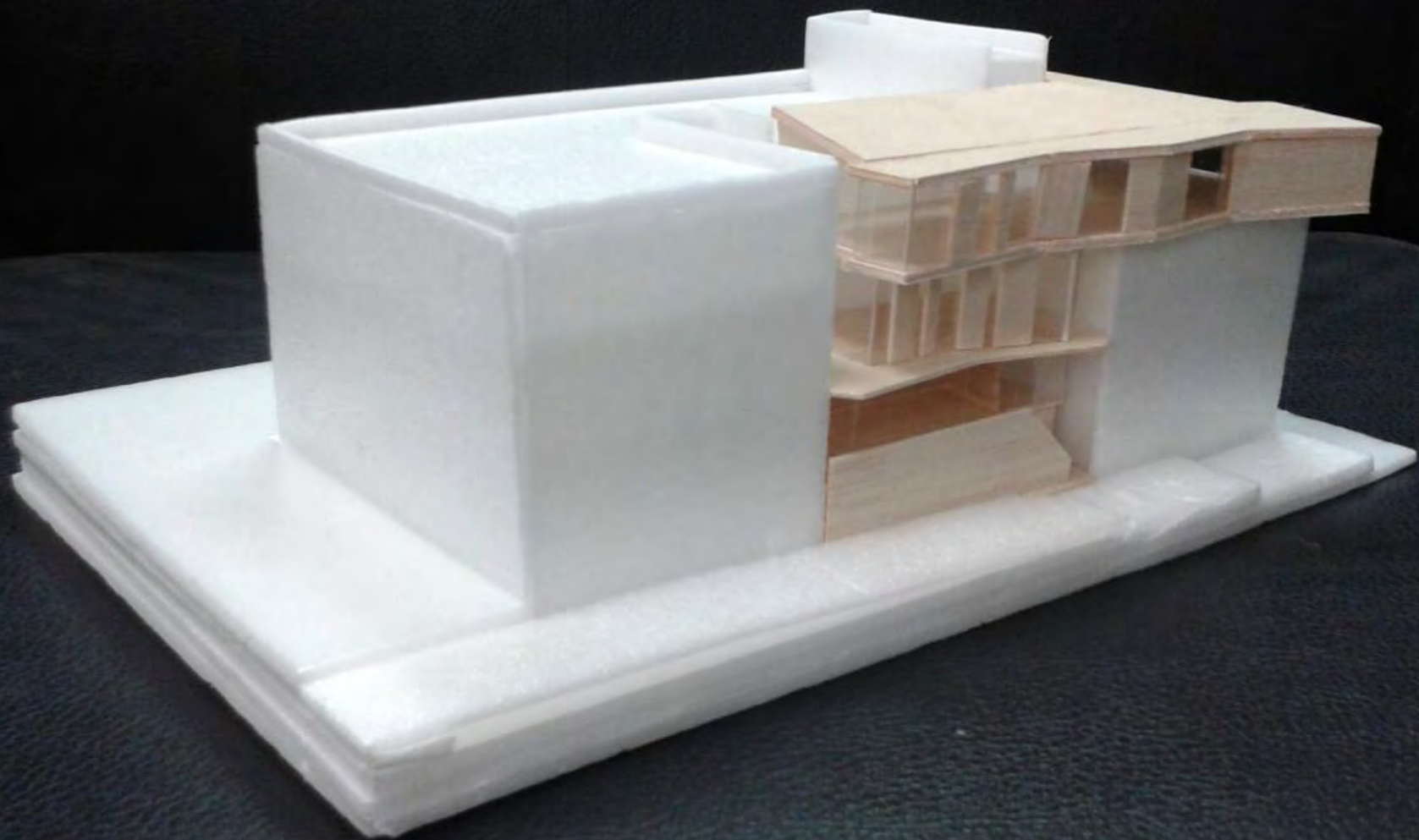


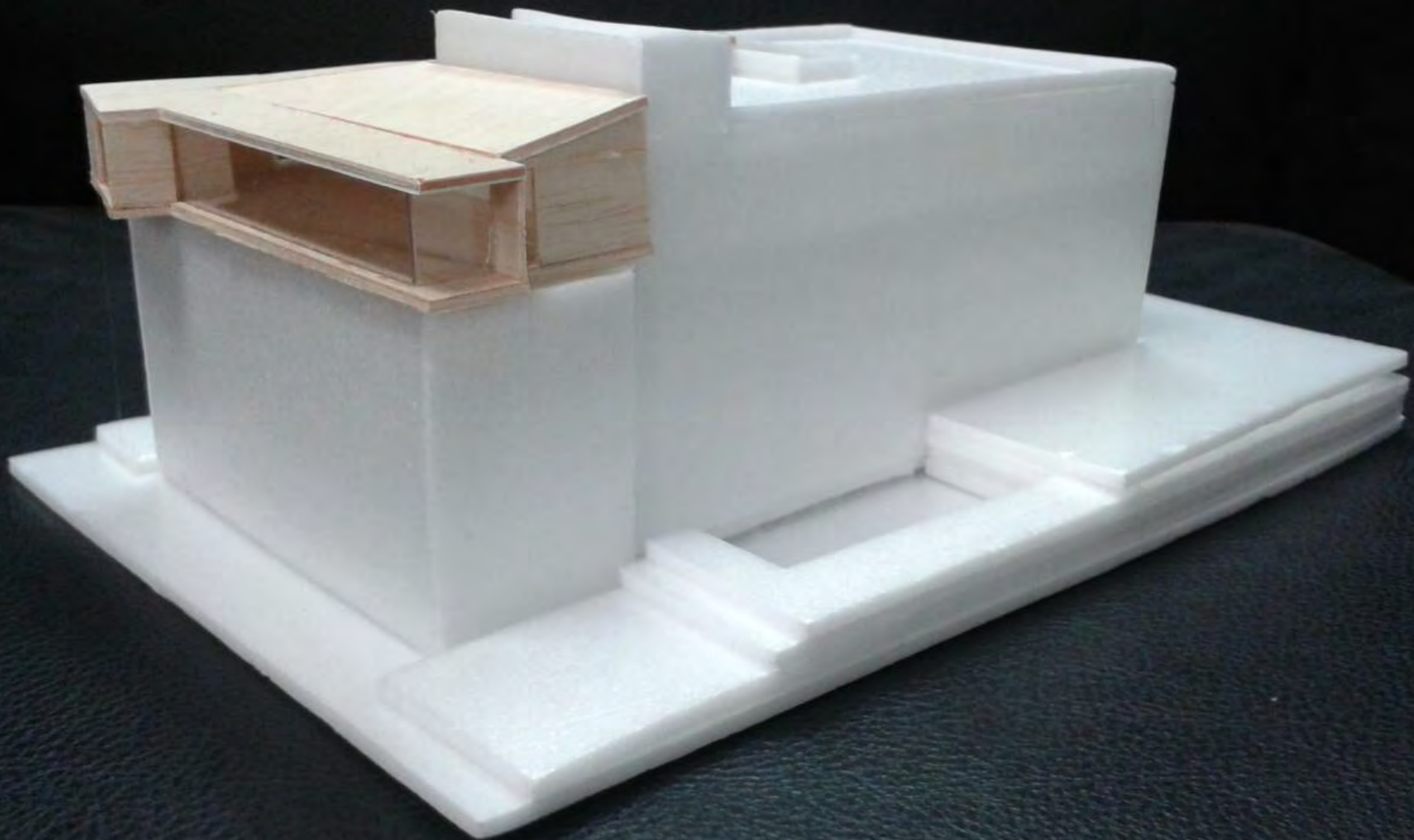
東海工設-希望工程  
〈系館擴建計畫〉



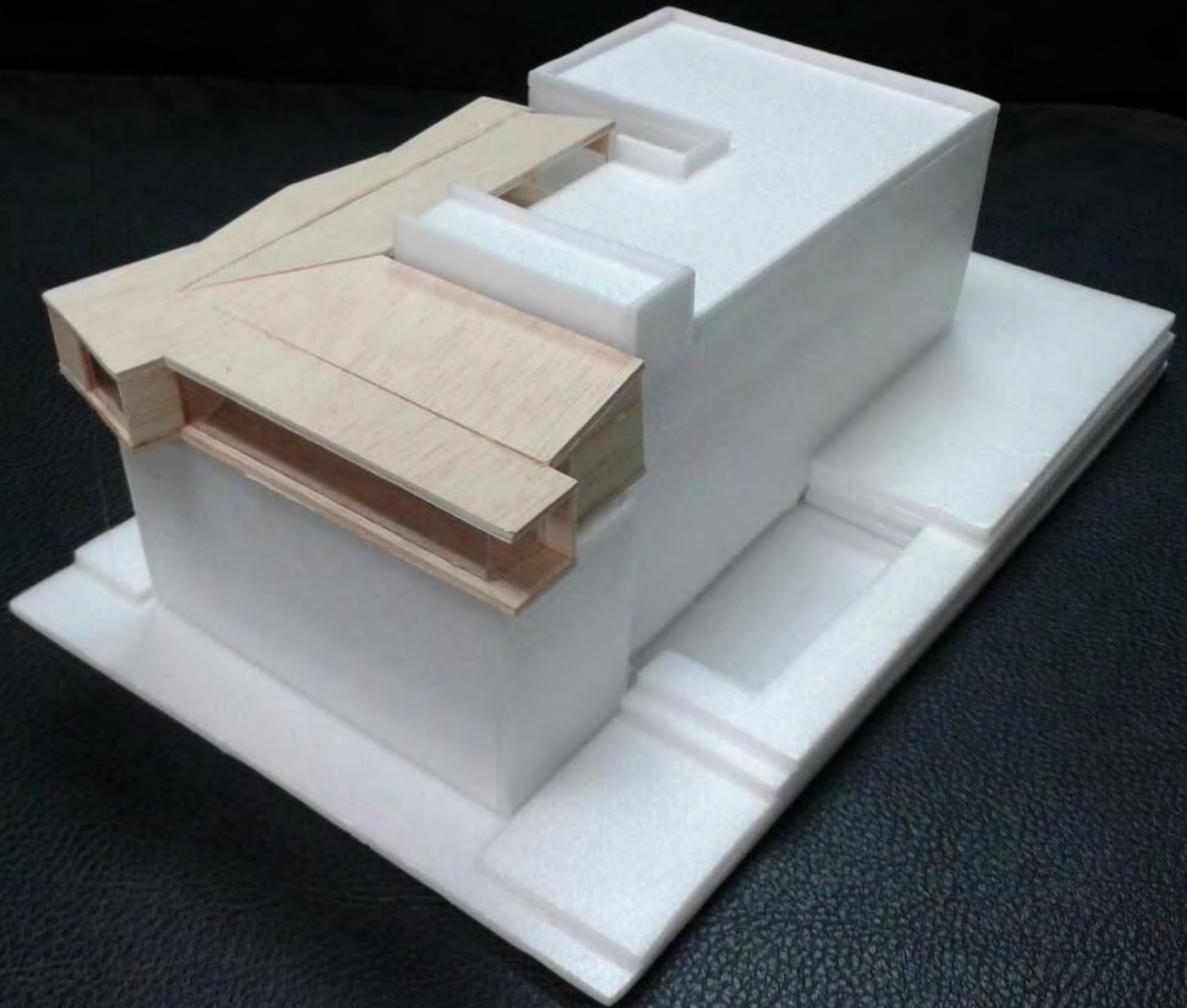








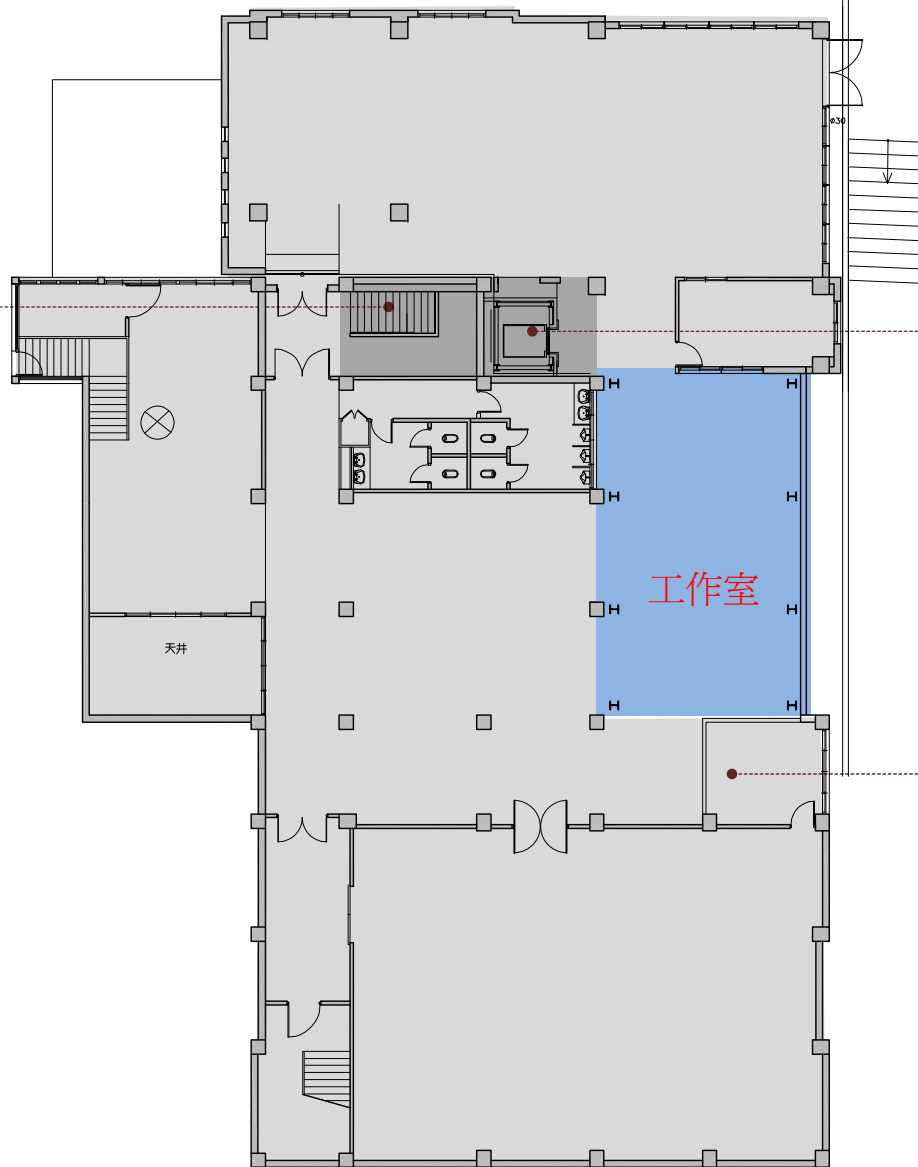






# B1樓增建共24.4坪

原樓梯拆除改建為  
無障礙樓梯



新設無障礙電梯

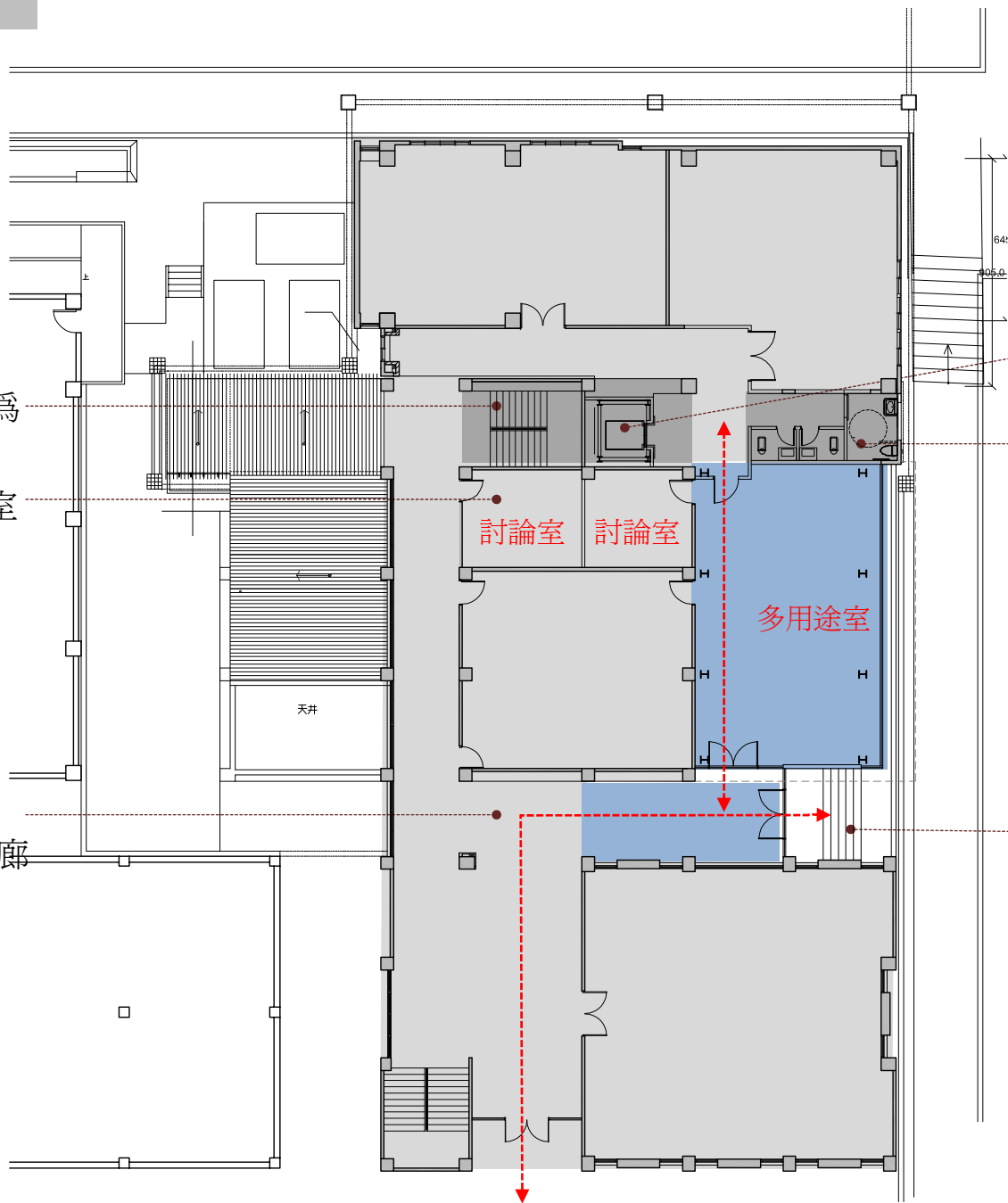
變電室移位

# 1樓增建共34.7坪

原樓梯拆除改建為  
無障礙樓梯

原廁所改為討論室

原教室拆除  
改為展示走廊



新設無障礙電梯

新設無障礙廁所

新設入口

# 2樓增建共28.6坪

原樓梯拆除改建為  
無障礙樓梯

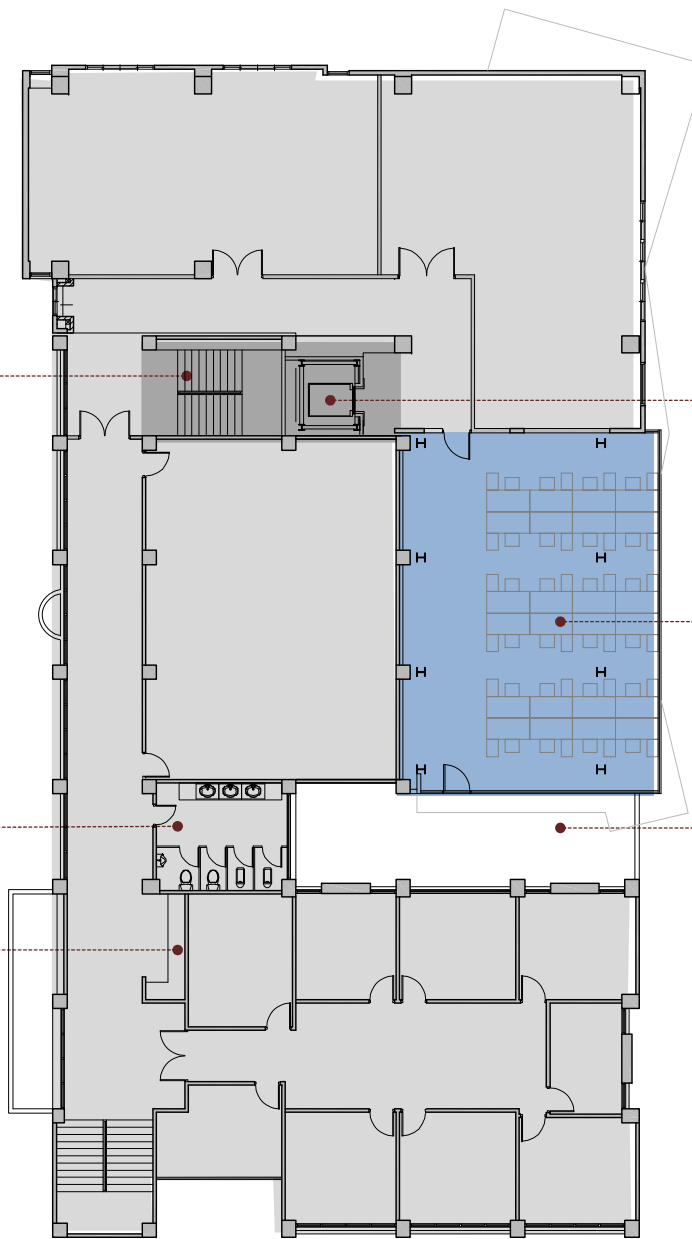
新設無障礙電梯

廁所改裝

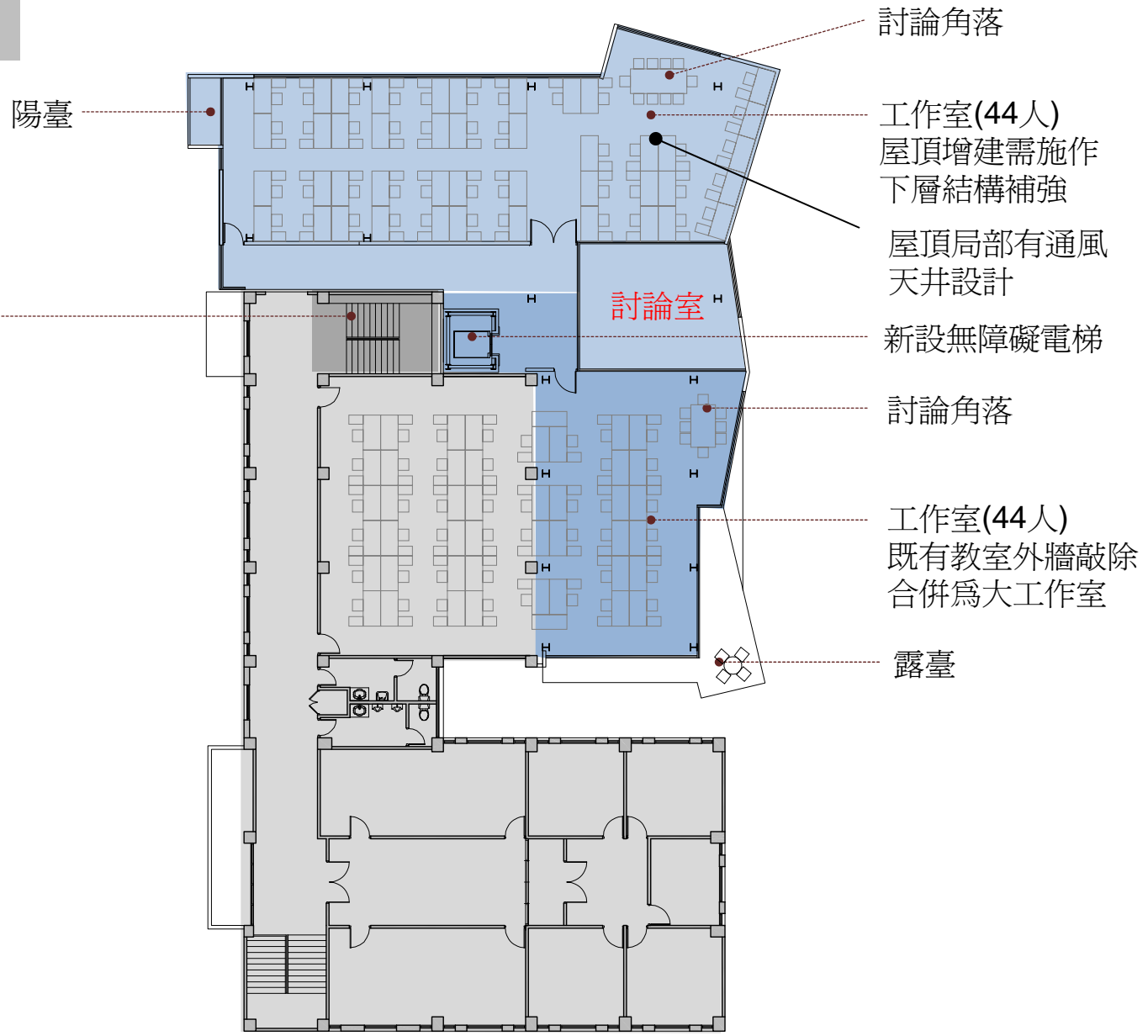
工作室(24人)

茶水間

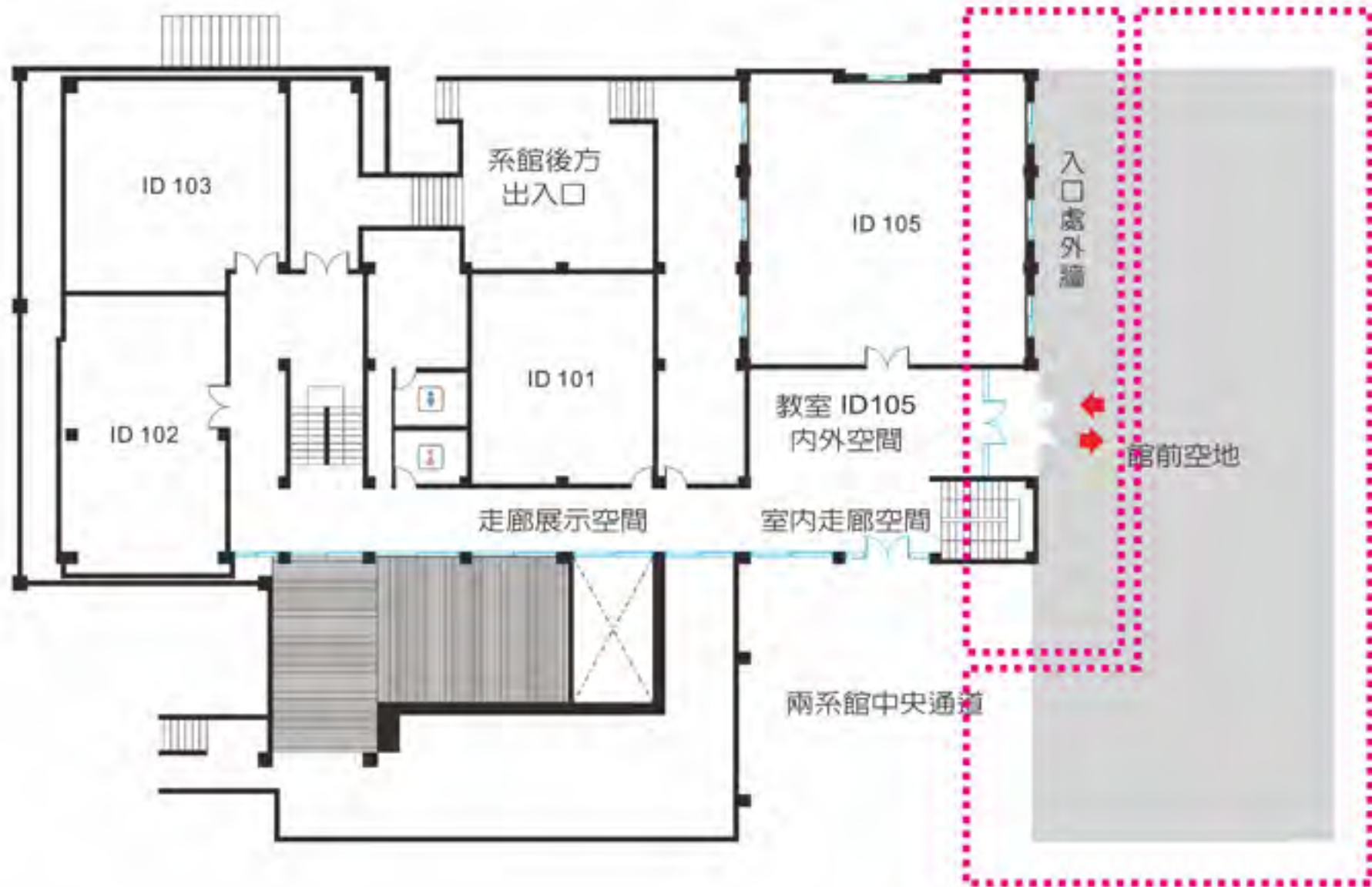
露臺



3樓中庭增建共43坪  
3樓既有屋頂增建共70坪



# 系館內部整修



## 外牆整修



# 木棧板整修



# 1F內部空間整修

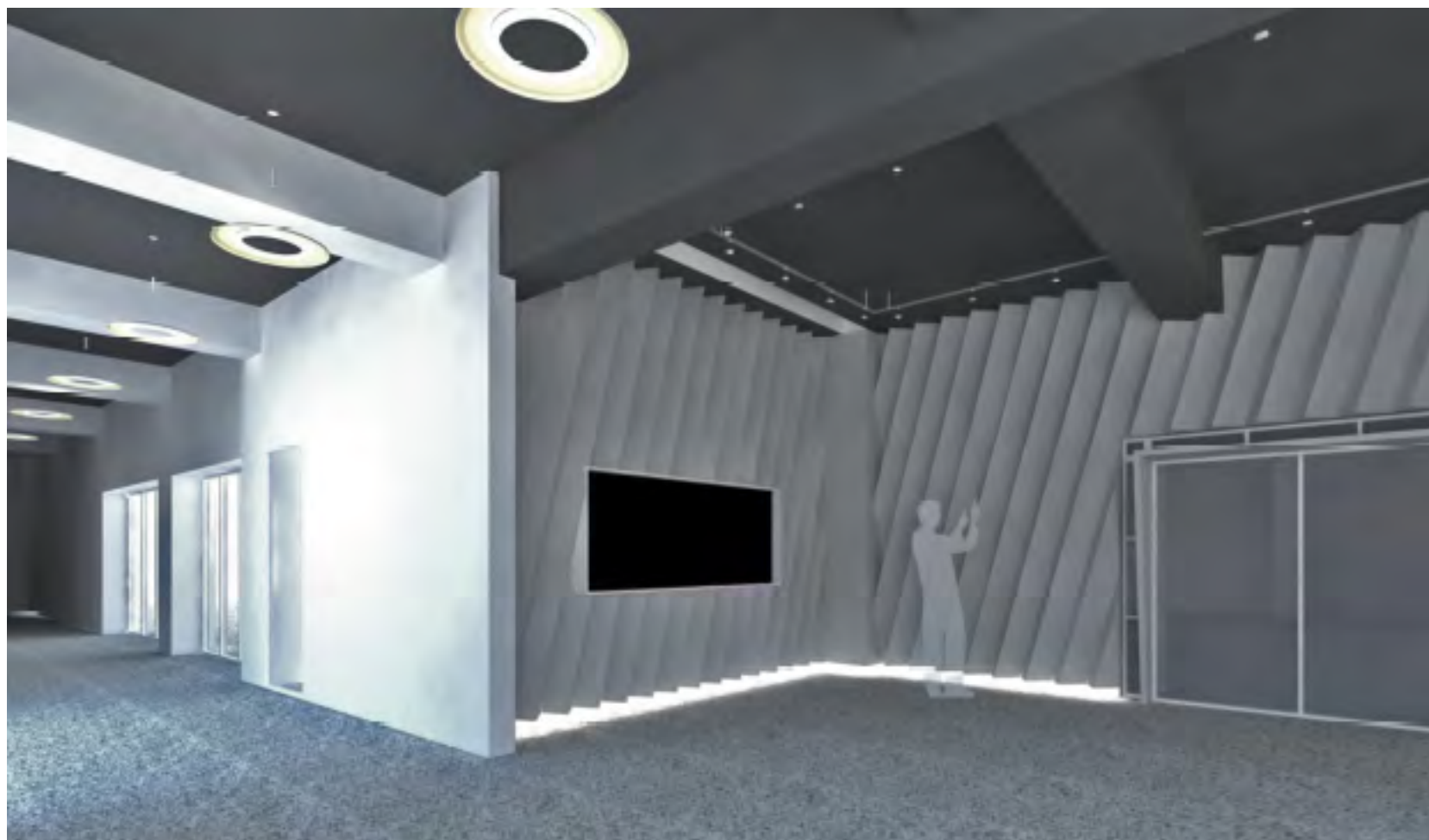




## 1F内部空間整修



## 1F内部空間整修



## 1F内部空間整修



## 1F内部空間整修



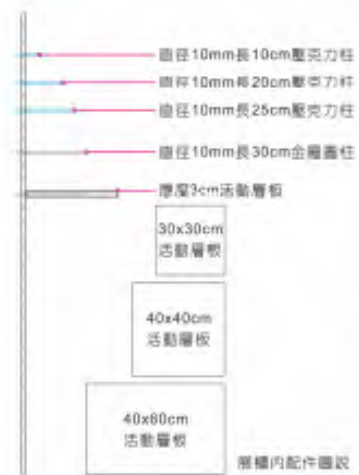
## 1F内部空間整修



## 1F内部空間整修



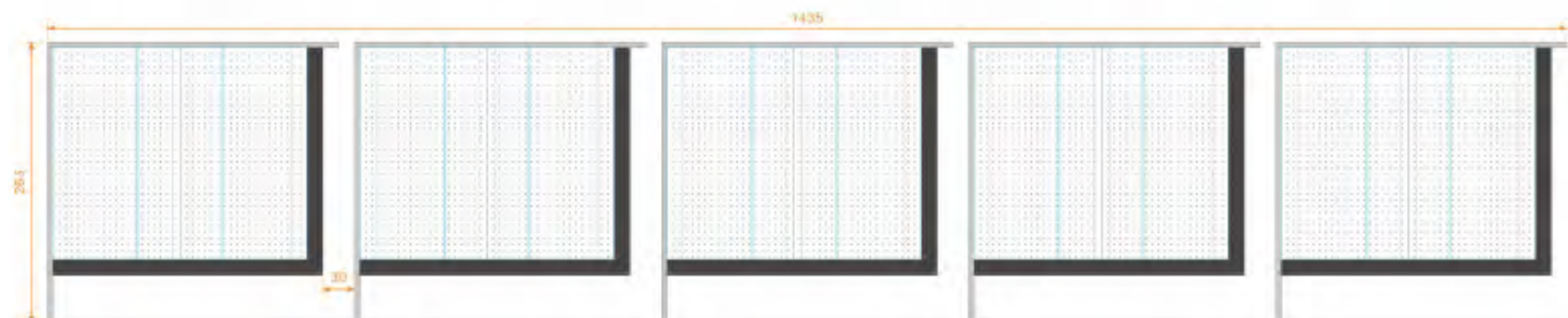
# 1F內部空間整修



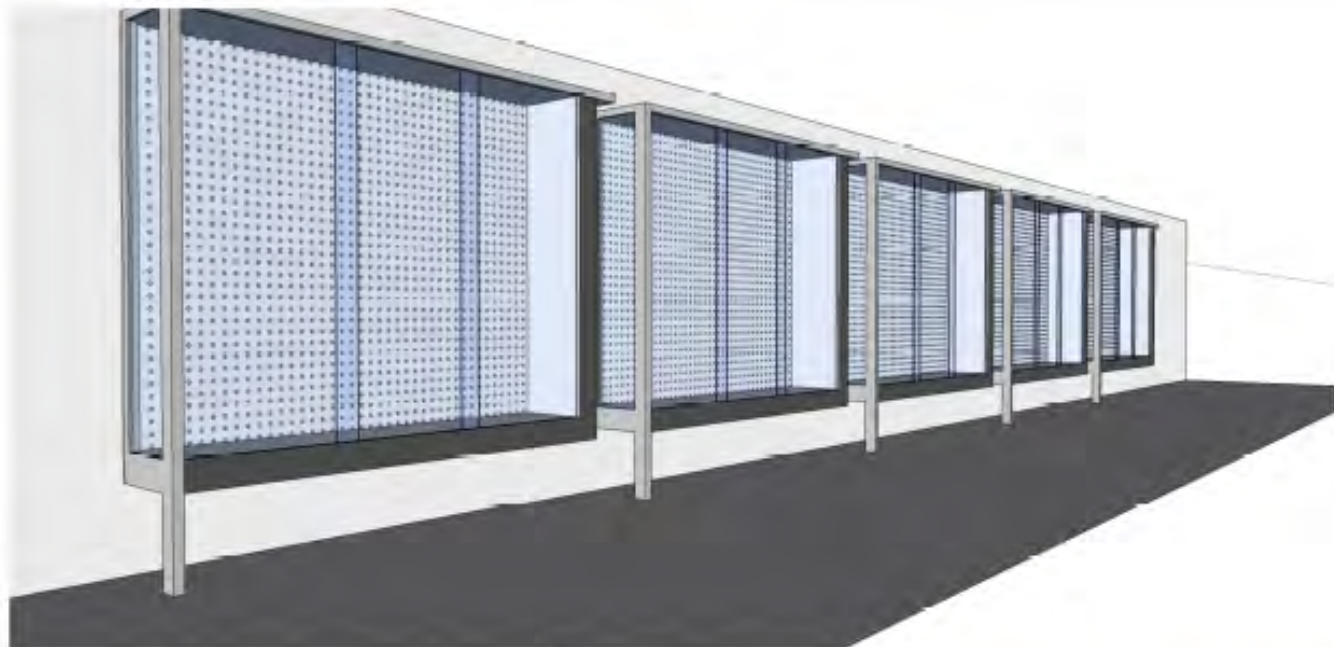
洞洞板展示示意圖



溝槽板展示示意圖



# 1F内部空間整修



様式A

